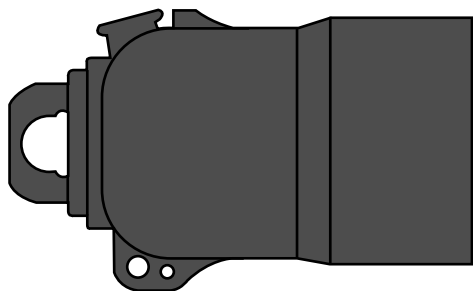


Bolted Receptacle Cap

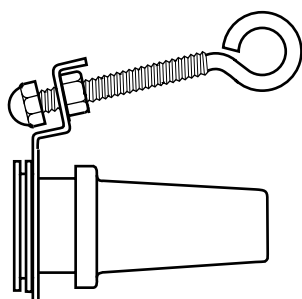


DRC400 - 24 kV Applications

DRC436 - 36 kV Applications

- Mates with 630 A bolted interfaces of CENELEC HD 506 S1.
- Seals mating bushing to maintain electrical ratings, external screen, and watertightness.
- Moulded EPDM insulation with semi-conductive EPDM external screen.
- Supplied with silicone lubricant and installation instructions.
- For de-energised operation.

Standoff Plug

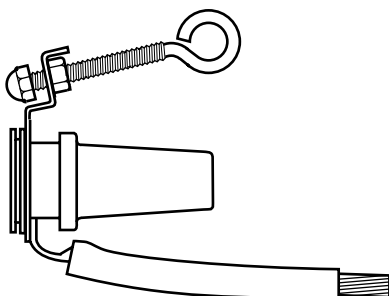


DPS400 - 24 kV Applications

DPS436 - 36 kV Applications

- Moulded epoxy part to support and deadend a bolted tee connector after removal from the apparatus bushing.
- Maintains the electrical ratings and submersibility of the mating connector.
- Supplied with silicone lubricant and installation instructions.
- For de-energised operation.

Earthing Plug

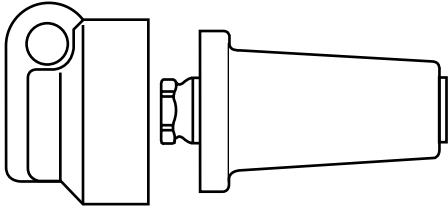


DPE400 - 24 kV & 36 kV Applications

- Moulded epoxy part to support and earth a bolted tee connector after removal from the apparatus bushing.
- Maintains submersibility of the mating connector.
- Supplied with silicone lubricant and installation instructions.
- For de-energised operation.

Accessories for 630 A Connectors

Basic Insulating Plug

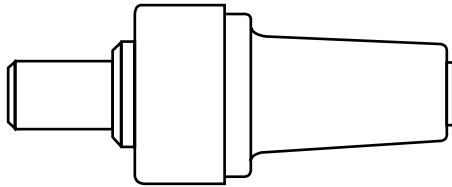


DPI400 - 24 kV Applications

DPI436 - 36 kV Applications

- Moulded epoxy part to dead-end a 400 series tee connector.
- Contains an integral capacitive test point.
- Includes the semi-conductive EPDM rubber cap.

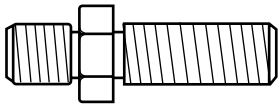
Reducing Tap Plug



DPR400

- Provides for the addition of a 250 A interface to a 400 series tee connector system.
- For maximum system voltage of 24 kV.
- Threads onto a standard 400 series clamping screw in place of a basic insulating plug.
- For de-energised operation.

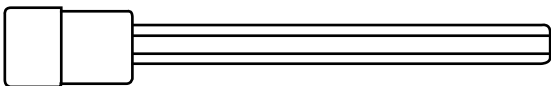
Clamping Screw



2638275C01

- Tin-plated copper part.
- Used for joining 630 A tee connectors and connector plugs.

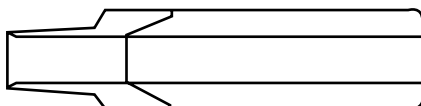
Hex Wrench



2638443C01

- 10 mm hex wrench to tighten the Cooper 400 and 600 series connecting plugs.
- Fits standard torque wrenches.

Cable Adapters



Catalog Number	Cable Information Range (mm)	
	Minimum	Maximum
CA400AA	13.5	17.2
CA400A	16.3	19.3
CA400B	18.3	21.0
CA400C	20.0	24.1
CA400D	23.1	27.0
CA400E	24.9	28.9
CA400F	27.7	32.6
CA400G	30.9	36.2
CA400H	34.0	39.5

The CA 400 cable adapters are used on all 400 series products including the 400 A elbow, 400 A plug-in tee, and the 630 A bolted tee connector.

Crimp Connectors Bolted Tee Connector (DT400 / DT436)



Conductor Size (mm ²)	DIN (Bimetallic)	EDF (Bimetallic)	DIN (All copper)
25	CDT630U25	CDT630E25	CDT630C25
35	CDT630U35	CDT630E35	CDT630C35
50	CDT630U50	CDT630E50	CDT630C50
70	CDT630U70	CDT630E70	CDT630C70
95	CDT630U95	CDT630E95	CDT630C95
120	CDT630U120	CDT630E120	CDT630C120
150	CDT630U150	CDT630E150	CDT630C150
185	CDT630U185	CDT630E185	CDT630C185
240	CDT630U240	CDT630E240	CDT630C240
300	CDT630U300		CDT630C300
400	CDT630U400		CDT630C400